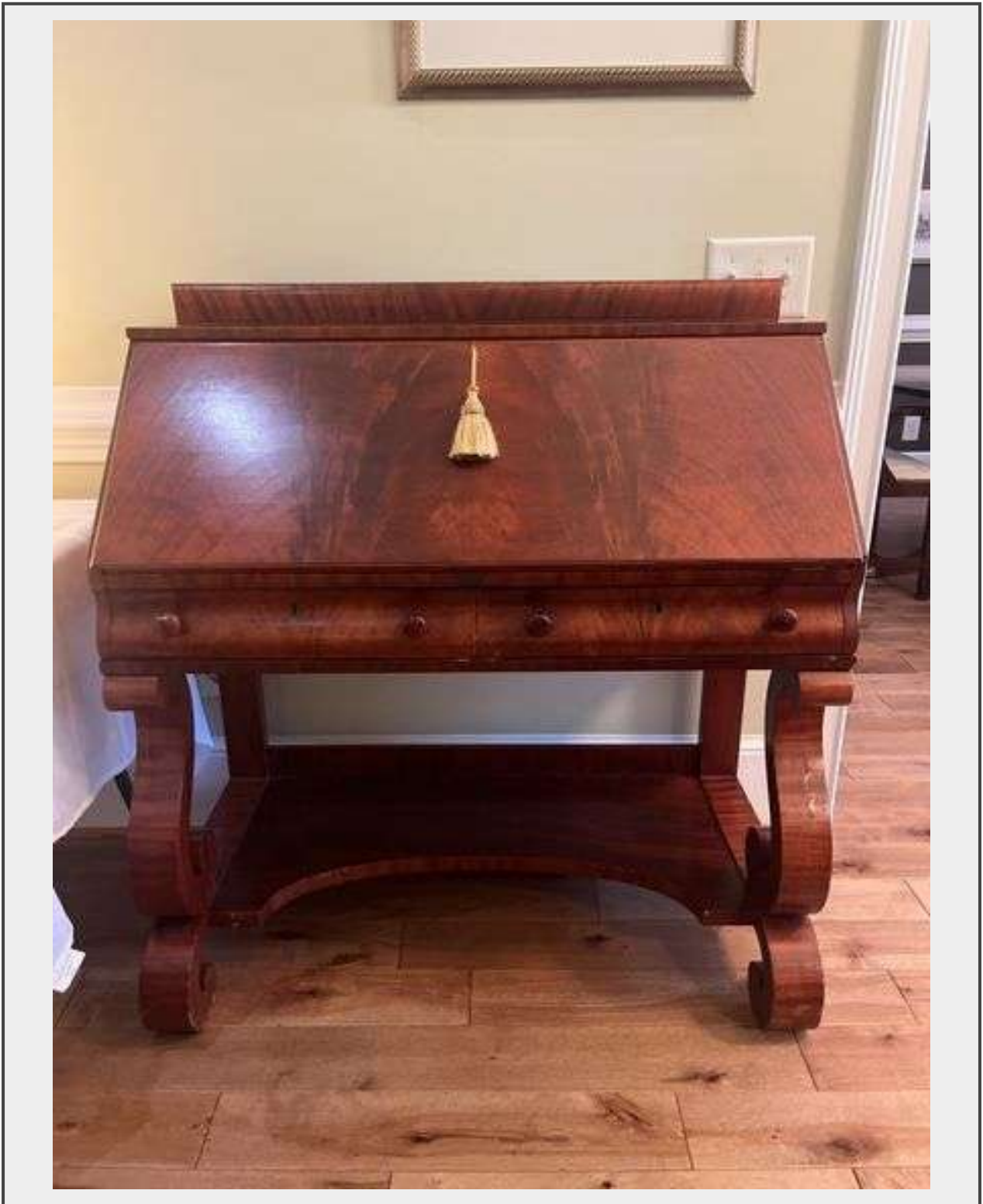


Sale Name: Buckner Estate Auction

LOT 102 - Slant Front Desk



Description

Empire style slant front desk with curved legs measures 40" wide x 20" deep x 44" tall. This beautiful piece has two drawers below with divided slots and drawers inside. Slight chips in veneer are noted in pictures. Very nice piece!

Quantity: 1



<https://bids.jrdixonauctions.com/>